

ASIAN PACIFIC JOURNAL OF CANCER PREVENTION



The Official Publication of the Asian Pacific Organization for
Cancer Prevention and the UICC Asia Regional Office for Cancer Control
An Official Journal of the International Association of Cancer Registries



Volume 9, Number 4, 2008



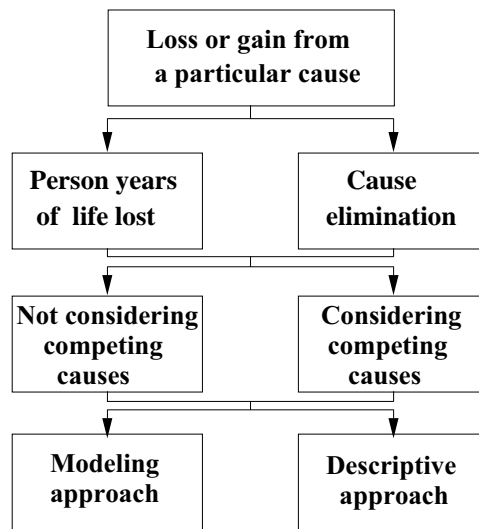
asian cancer control

APOCP Areas

- Australasia
- Central Asia
- China
- Japan
- Korea
- South Asia
- South-East Asia
- Western Asia

Figure from Dhar et al ,
pp 797-805

Determination of Social Loss or Gain Assessment of Burden



Hospital-based Cancer Registration

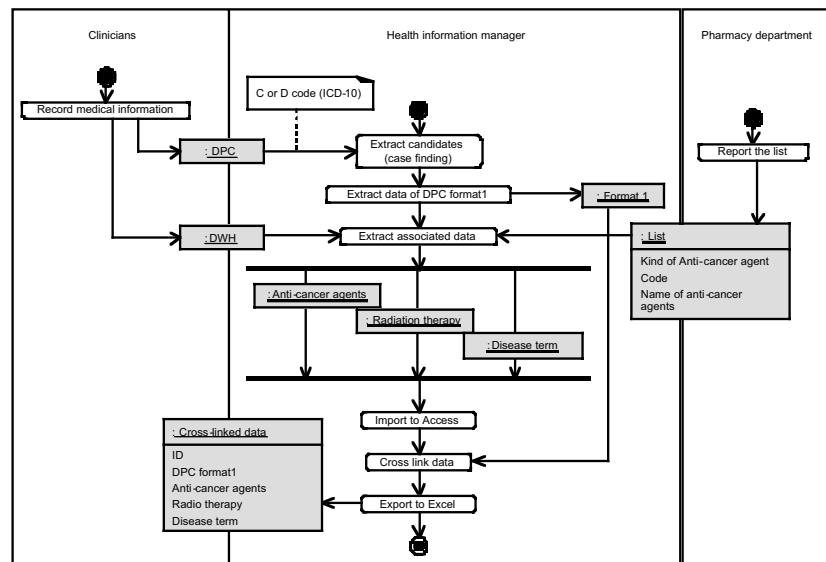


Figure from Shiki et al , pp 789-796

Clinical Treatment Education
Epidemiology Intervention Palliation
Screening Toxicological Pathology

<http://www.apocp.org>

ASIAN PACIFIC JOURNAL OF CANCER PREVENTION

APJCP Chief Editor

Malcolm A Moore
APJCP Editorial Office,
UICC Asia Regional Office
apocpcontrol@yahoo.com

APOCP Secretary-General

Keun-Young Yoo
Department of Preventive Medicine,
Seoul National University, Korea
kyyoo@plaza.snu.ac.kr

APOCP President

Murat Tuncer
Department of Cancer Control,
Ministry of Health, Turkey
murat.tuncer@saglik.gov.tr

Subject Editors - Epidemiology

Daehee Kang
Seoul National University, Seoul, Korea
dhkang@snu.ac.kr

Alireza Mosavi-Jarrahi
Shahid Beheshti University, Tehran, Iran
rmosavi@yahoo.com

Shinkan Tokudome
Nagoya City University, Nagoya, Japan
tokudome@med.nagoya-cu.ac.jp

Subject Editors - Toxicological Pathology

Sukta Das
Chittaranjan National Cancer Institute, Kolkata, India
suk_tadas@yahoo.com

Dae Joong Kim
Chungbuk National University, Cheongju, Korea
kimdj@cbu.ac.kr

Hiroyuki Tsuda
Nagoya City University, Nagoya, Japan
htsuda@med.nagoya-cu.ac.jp

Subject Editors - Education/Registration

Supanee Sriamporn
KhonKaen University, KhonKaen, Thailand
supanee@kku.ac.th

Suraporn Wiangnon (IACR Representative)
Khon Kaen University, Khon Kaen, Thailand
surapon@kku.ac.th

Balkrishna B Yeole
Bombay Cancer Registry, Indian Cancer Society, India
bcrics@vsnl.com

Subject Editors - Screening and Intervention

Partha Sarathi Basu
Chittaranjan National Cancer Institute, Kolkata, India
ceds@vsnl.com

Tony Hsui-Hsi Chen
National Taiwan University, Taipei, Taiwan
chenlin@ntw.edu.tw

Yun-Chul Hong
Seoul National University College of Medicine, Korea
ychong1@snu.ac.kr

Aims and Scope

The aim of the Asian Pacific Organization for Cancer Prevention and Control is to promote an increased awareness in all areas of cancer prevention/control and to stimulate research and practical intervention approaches. Its official journal, the APJCP, is indexed on PubMed and Science Citation Index Expanded. The scope is wide-ranging, including descriptive, analytical and molecular epidemiology, experimental and clinical histopathology/biology of preneoplasias and early neoplasias, assessment of risk and beneficial factors, experimental and clinical trials of primary preventive measures/agents, screening approaches and secondary prevention, clinical epidemiology and all aspects of cancer prevention education. All of the papers published are freely available as pdf files downloadable from www.apocp.org or obtainable from the first authors.

International Advisory Board

Yoon-Ok Ahn, Seoul
Gülsün Ozentürk, Izmir
Junshi Chen, Beijing
Yu-Tang Gao, Shanghai
Tadao Kakizoe, Tokyo
Chaudhry Kishore, New Delhi
Arun P Kurkure, Mumbai
Nadeem Nagi, Sana'a
Maqsood Siddiqi, Kolkatta
Takashi Sugimura, Tokyo
Kazuo Tajima, Nagoya
Do Duc Van, Hanoi

Kunio Aoki, Nagoya
Fahanar Badar, Lahore
Santoso Cornain, Jakarta
P Gangadharan, Kochin
Balmal Singh Karki, Kathmandu
Tomoyuki Kitagawa, Tokyo
Adriano Laudico, Manila
Noorwati, Jakarta
Soeripto, Yogyakarta
Young-Joon Surh, Seoul
Suketami Tominaga, Nagoya
Minro Watanabe, Iwate

MAY Ariyaratna, Colombo
Yasmin Bhurgri, Karachi
Somyos Deerasamee, Bangkok
Sagimbek Igisinov, Almaty
Thiravud Khuhaprema, Bangkok
Hiroshi Kobayashi, Sapporo
MA Mohagheghi, Tehran
Max Parkin, London
Petcharin Srivatanakul, Bangkok
Maitree Suttajit, Chiang Mai
Tumubaatar, Ulaanbaatar
Cheng Har Yip, Kuala Lumpur

ASIAN PACIFIC JOURNAL OF CANCER PREVENTION

The Official Publication of the
Asian Pacific Organization for Cancer Prevention and Control
and the UICC-Asian Regional Office for Cancer Control
and an Official Journal of the
International Association of Cancer Registries

CONTENTS

Volume 9, Number 4, October-December 2008

CHIEF EDITOR REPORT

The APJCP in its Ninth Year

Malcolm A Moore 541

MINI-REVIEW

Protective Effects of Asian Dietary Items on Cancers - Soy and Ginseng

Jeongson Kim 543

RESEARCH COMMUNICATIONS

Incidence of Genitourinary Cancers in the Islamic Republic of Iran: A Survey in 2005

Mohammad Esmaeel Akbari et al 549

Comparison of ER, PR & HER-2/neu (C-erb B 2) Reactivity Pattern with Histologic Grade, Tumor Size and Lymph Node Status in Breast Cancer

Azizun-Nisa et al 553

Effect of Change in Symptoms, Respiratory Status, Nutritional Profile and Quality of Life on Response to Treatment for Advanced Non-small Cell Lung Cancer

Anant Mohan et al 557

Distribution of HPV-16 Intratypic Variants among Women with Cervical Intraepithelial Neoplasia and Invasive Cervical Cancer in Mongolia

Battogtokh Chimeddorj et al 563

Eating Habits, Knowledge about Cancer Prevention and the HPLP Scale in Turkish Adolescents

Hafize Ozturk Can et al 569

Comparison between Siriraj Liquid-based and Conventional Cytology for Detection of Abnormal Cervicovaginal Smears: A Split-sample Study

Somsak Laiwejpithaya et al 575

Knowledge, Attitude and Practices of Non-oncologist Physicians Regarding Cancer and Palliative Care: A Multi-center Study from Pakistan

Asim Jamal Shaikh et al 581

Effect of Demographic and Clinicopathologic Factors on Prognosis of Early Gastric Cancer in Iran

Bijan Moghimi-Dehkordi et al 585

Impact of Socio-economic Factors in Delayed Reporting and Late-stage Presentation among Patients with Cervix Cancer in a Major Cancer Hospital in South India

Michelle Kaku et al 589

Ethanollic Rhizome Extract from *Kaempferia parviflora* Wall. ex. Baker Induces Apoptosis in HL-60 Cells

Ratana Banjerdpongchai et al 595

Editorial Board

Woong Sik Ahn, Seoul
Takayuki Akasu, Tokyo
Hideyuki Akaza, Tsukuba
Suminori Akiba, Kagoshima
Gürbüz Aktas, Izmir
Jamal M Arif, Riyadh
Morteza Atri, Tehran
Micha Barchana, Jerusalem
Chien-Jien Chen, Taipei
Jian-Guo Chen, Qidong
Kexin Chen, Tianjin
Kee-Seng Chia, Singapore
An-Sik Chung, Taejon
Santoso Cornain, Jakarta
Ratchada Cressey, Chiang Mai
Sultan Eser, Izmir
William Foo, Hong Kong
Katsuhiko Fukuda, Kurume
Shoji Fukushima, Osaka
Mark T Goodman, Honolulu
Adele Green, Brisbane
Nobuyuki Hamajima, Nagoya
Tsutomu Hashimoto, Wakayama
Nurbek Iginov, Astana
Gulnura Iginov, Almaty
Saginbek Iginov, Almaty
Gen Inuma, Tokyo
Masato Ikeda, Kitakyushu
Katsumi Imaida, Kagawa
Manami Inoue, Tokyo
Takafumi Ishida, Tokyo
Hideki Ishikawa, Kobe
Yoshinori Ito, Nagoya
Tetsuya Kamataki, Sapporo
Jeongseon Kim, Goyang
Reiko Kishi, Sapporo
Yoichi Konishi, Nara
Suminori Kono, Fukuoka
Choong Won Lee, Daegu
Won Chul Lee, Seoul
Hiroshi Maeda, Kumamoto
Akihiko Maekawa, Tokyo
Le Bach Mai, Hanoi
Parvin Mehdipour, Tehran
Anjum Memon, Kuwait
Masumi Minowa, Tokyo
Masanao Miwa, Tsukuba
Mitsuru Mori, Sapporo
Hideki Mori, Gifu
Masaki Nagai, Saitama
Kei Nakachi, Hiroshima
Dai Nakae, Tokyo
Hitoshi Nakagama, Tokyo
Masakazu Nakamura, Osaka
Hoyoku Nishino, Kyoto
Le Tran Ngoan, Hanoi
Filiz Ogce, Izmir
Hiroko Ohgaki, Lyon
Hajime Ohgashi, Kyoto
Hiroshi Ohshima, Shizuoka
Yoshiyuki Ohno, Nagoya
Naoyuki Okamoto, Kanagawa
Toshihiko Osawa, Nagoya

Importance of Social Support for Functional Status in Breast Cancer Patients <i>Sevgi Ozkan and Filiz Ogce</i>	601
Attitudes toward Hepatitis B and Liver Cancer Prevention among Chinese Americans in the San Francisco Bay Area, California <i>Ellen T Chang et al</i>	605
Screening for Oral Cancer/Pre-cancer: Knowledge and Opinions of Dentists Employed in the Public Sector Dental Services of Sri Lanka <i>A Ariyawardana and L Ekanayake</i>	615
Diethylnitrosamine-induced Hepatic Lesions are Greater in Rats Maintained under a Light-dark Cycle than under Constant Light, Related to the Locomotor Activity Rhythm <i>Yoshiaki Isobe et al</i>	619
Immunohistochemical Overexpression of p16 Protein Associated with Cervical Cancer in Thailand <i>Adisorn Jedpiyawongse et al</i>	625
Computational Prediction of Nuclear Localization Signals and Structural Characteristics of 91 Types of HPV E6 Proteins <i>Maryam Esmaeili and Hassan Mohabatka</i>	631
The Relationship Between Tobacco Advertisements and Smoking Status of Youth in India <i>Payal B Shah et al</i>	637
Outcomes of Pediatric Nephroblastoma in Southern Thailand <i>Surasak Sangkhathat et al</i>	643
A Case-Control Study on the Association Between Environmental Factors and the Occurrence of Acute Leukemia Among Children in Klang Valley, Malaysia <i>Hairul Izwan Abdul Rahman et al</i>	649
Interobserver Reproducibility in Determining p16 Overexpression in Cervical Lesions : Use of a Combined Scoring Method <i>Songkhun Vinyuvat et al</i>	653
Association between the 1793G>A MTHFR Polymorphism and Sporadic Colorectal Cancer in Iran <i>Mahdi Montazer Haghighi et al</i>	659
C-erbB-2 Onco-Protein Expression in Breast Cancer: Relationship to Tumour Characteristics and Short-Term Survival in Universiti Kebangsaan Malaysia Medical Centre <i>NA Sharifah et al</i>	663
Burden of Cancer and Projections for 2016, Indian Scenario: Gaps in the Availability of Radiotherapy Treatment Facilities <i>NS Murthy et al</i>	671
Cancer Data Analysis in the Pathology Department, Combined Military Hospital, Multan, Pakistan 2002-2007 <i>Muhammad Atique et al</i>	679
Whole Body 18F-FDG PET/CT Imaging in the Detection of Primary Tumours in Patients with a Metastatic Carcinoma of Unknown Origin <i>Ali Osman Kaya et al</i>	683
Molecular Cytogenetic Analysis of Urothelial Carcinomas using Urine Samples <i>M Ayati et al</i>	687
Effects of Emotional Support-Focused Nursing Interventions on the Psychosocial Adjustment of Breast Cancer Patients <i>Aysun Babacan Gumus and Olcay Cam</i>	691

<p>Semih Ötles, Izmir Ozgur Ozyilkan, Ankara Kwang-Kyun Park, Seoul Nguyen M Quoc, Ho Chi Minh City R Rajkumar, Ambillikai T Rajkumar, Chennai Hiroshi Saito, Tokyo Toshiyuki Sakai, Kyoto Luming Shi, Singapore Hai Rim Shin, Seoul Tomoyuki Shirai, Nagoya Hutcha Sripling, Songklaa Songphol Srisukho, Chiang Mai Toshiro Takezaki, Kagoshima Takuji Tanaka, Kanazawa Masae Tatematsu, Nagoya Witaya Thamavit, Bangkok Danai Tiwawech, Bangkok Eiju Tsuchiya, Saitama Ichiro Tsuji, Sendai Hideaki Tsukuma, Osaka Soo Jong Um, Seoul Gajalakshmi Vendhan, Chennai Keiji Wakabayashi, Tokyo Hiroshi Watanabe, Kyoto Hiromitsu Watanabe, Hiroshima Yoshiyuki Watanabe, Kyoto Viroj Wiwanitkit, Bangkok Sopit Wongkham, Khon Kaen Zentaro Yamagata, Yamanashi Naohito Yamaguchi, Tokyo Kenji Yamao, Nagoya Takesumi Yoshimura, Kitakyushu Shun-Zhang Yu, Shanghai Yasuhito Yuasa, Tokyo</p>

This pdf file is supplied free of charge by the Asian Pacific Organization for Cancer Prevention and Control, in cooperation with the UICC-Asian Regional Office for Cancer Control and Asian Pacific Press, Ltd.



E-Cadherin Expression Correlates With Histologic Type But Not Tumour Grade in Invasive Breast Cancer <i>Md Isa Nurismah et al</i>	699
Effects of Socio-economic and Demographic Factors in Delayed Reporting and Late-stage Presentation among Patients with Breast Cancer in a Major Cancer Hospital in South India <i>Rabia Ali et al</i>	703
Epidemiology of Soft Tissue Sarcomas in Karachi South, Pakistan (1995-7) <i>Yasmin Bhurgri et al</i>	709
Prevalence of High-grade Cervical Lesion in Women with LSIL and HSIL Cytology and Prevalence of Invasive Cancer in Women Cytologically Positive for Malignancy <i>Sathone Boonlikit</i>	715
Clinical Outcome of Iranian Patients with Advanced Ovarian Cancer with Neoadjuvant Chemotherapy versus Primary Debulking Surgery <i>Fatemeh Ghaemmaghami et al</i>	719
Cancer Incidence in North Cyprus (1990-2004) Relative to European Rate <i>Evren Hincal et al</i>	725
Role of GSTM1 (Present/Null) and GSTP1 (Ile105Val) Polymorphisms in Susceptibility to Acute Lymphoblastic Leukemia among the South Indian Population <i>KJ Suneetha et al</i>	733
Accuracy of Intra-operative Frozen Sections in the Diagnosis of Ovarian Masses <i>Prapaporn Suprasert et al</i>	737
Symptom Management in Patients with Cancer of the Female Reproductive System Receiving Chemotherapy <i>Yupin Phianmongkhonl and Natthawan Suwan</i>	741
Association of Colorectal Carcinoma with Metabolic Diseases; Experience with 138 Cases from Kelantan, Malaysia <i>Nor Hayati Othman and Anani Aila Mat Zin</i>	747
Relation between Demographic Factors and Type of Gastrointestinal Cancer using Probit and Logit Regression <i>Asma Pourhoseingholi et al</i>	753
Expression of Cyclooxygenase-1 in Epithelial Ovarian Cancer: A Clinicopathological Study <i>Jakkapan Khunnarong et al</i>	757
Clastogenic Potential of <i>Ruta graveolens</i> Extract and a Homeopathic Preparation in Mouse Bone Marrow Cells <i>Korengath C Preethi et al</i>	763
Detection of Human Papillomavirus in Oral Squamous Cell Carcinoma, Leukoplakia and Lichen Planus in Thai Patients <i>Siribang-on P Khovidhunkit et al</i>	771
Time Trend in Breast and Cervix Cancer of Women in India, (1990-2003) <i>Ramnath Takiar and Atul Srivastav</i>	777
Utility of Ki-67 and p53 in Distinguishing Cervical Intraepithelial Neoplasia 3 from Squamous Cell Carcinoma of the Cervix <i>Geok Chin Tan et al</i>	781
Clinical Relevance of Atypical Squamous Cells of Undetermined Significance by the 2001 Bethesda System: Experience from a Cervical Cancer High Incidence Region <i>Nuttavut Kantathavorn et al</i>	785
Unified Modeling Language (UML) for Hospital-based Cancer Registration Processes <i>Naomi Shiki</i>	789
COMMENTARIES	
Study of Social Loss or Gain from a Particular Cause: Scope for the Developing Countries - a Review with Reference to Cancer <i>Murali Dhar et al</i>	797
Tobacco Control in India: Present Scenario and Challenges Ahead <i>Tarveen Jandoo and Ravi Mehrotra</i>	805
Information Communication Technology: New Approach for Rural Cancer Care Improvement <i>Elham Maserat</i>	811
Establishment of an Asian Cancer Registry Network - Problems and Perspectives <i>Malcolm A Moore et al</i>	815
CT Colonography - Towards Applications for Colorectal Cancer Screening <i>Gen Iinuma</i>	833
INFORMATION FOR AUTHORS	

The APJCP in 2008

Malcolm A Moore (apocpcontrol@yahoo.com)

Mini-Abstract

The APJCP included 160 papers in 2008, the broad subject categories and countries of origin being indicated

Fields	Turkey Arabia	Iran	Central* Pakistan	South Asia** India	Thailand Myanmar	Malaysia	Brunei Vietnam	China Korea	Japan	Editors West [#]	Total (%)							
Education/Smoking	5	0	1	1	0	5	0	0	1	2	0	0	0	1	4	4	24 (12)	
Epidemiology	2	1	13	4	2	17	0	0	5	4	0	2	3	4	4	3	0	65 (37)
Secondary Prevention	2	0	4	1	0	0	1	0	7	0	0	0	1	0	1	0	0	16 (15)
Toxicological Pathology	0	1	5	2	0	2	0	0	9	3	2	0	0	0	5	0	0	29 (14)
Clinical	5	0	4	2	0	4	0	0	8	3	0	0	0	0	0	0	0	26 (22)
Total	14	2	27	10	2	28	1	0	30	12	2	2	4	4	11	7	4	160 (100)

*Central Asia, Kyrgyzstan and Mongolia, **Sri Lanka, Bangladesh and Nepal, #Western World, Australia, USA and Europe

in the Table. Comments would be welcome.

Asian Pacific J Cancer Prev, 9, 541-543

Protective Effects of Asian Dietary Items on Cancers - Soy and Ginseng

Jeongson Kim (jskim@ncc.re.kr)

Mini-Abstract

Dietary factors are regarded as exerting major influences on cancer development in various organ sites and in Asia there is particular interest in the potential preventive effects of foodstuffs such as soy products and ginseng. There is good evidence for protective influence of soy products against breast, ovarian and endometrial cancers, while preventive potential of ginseng is perhaps best documented for gastric cancer. The traditional diets in Eastern Asia may need more emphasis in efforts to combat the growing problem of cancer in this region of the world.

Asian Pacific J Cancer Prev, 9, 543-548

Incidence of Genitourinary Cancers in the Islamic Republic of Iran: A Survey in 2005

Mohammad Esmaeel Akbari, Seyed Jalil Hosseini, Alireza Rezaee*, Mojtaba Mohammad Hosseini, Iraj Rezaee

Mehrdad Sheikhvatan

(swt_f@yahoo.com)

Mini-Abstract

The incidence of different types of genitourinary cancers among the Iranian population according to the records of the Iran Ministry of Health and Medical Education is reported. In a population-based cancer-registry study in 2005, the prevalences of urological cancers were as follows: bladder cancer 48.3%; prostate cancer 33.4%; renal cell carcinoma 10.3%; renal pelvis and ureter cancer 0.75%; testicular cancer 6.15%; penile cancer 0.15%; urethral cancer 0.45%; and other unspecified urinary cancers 0.43%.

Asian Pacific J Cancer Prev, 9, 549-552

Comparison of ER, PR & HER-2/neu (C-erb B 2) Reactivity Pattern with Histologic Grade, Tumor Size and Lymph Node Status in Breast Cancer

Azizun-Nisa, Yasmin Bhurgri*, Farrukh Raza,

Naila Kayani

(bhurgri@cyber.net.pk)

Mini-Abstract

ER and PR expression in breast cancers in the current study of 150 modified mastectomy specimens received at the section of histopathology, Aga Khan University Hospital, was found to be comparable to published international data, but the frequency of HER-2/neu expression was higher, possibly reflecting a young age at diagnosis. Assessment of prognostic markers for the clinical management of breast cancer patients is strongly advocated to provide best therapeutic options.

Asian Pacific J Cancer Prev, 9, 553-556

Effect of Change in Symptoms, Respiratory Status, Nutritional Profile and Quality of Life on Response to Treatment for Advanced Non-small Cell Lung Cancer

Anant Mohan, P Singh, S Kumar, C Mohan, AK Pathak, RM Pandey, R Guleria (*anantmohan@yahoo.com*)

Mini-Abstract

Lung cancer patients have a poor QOL. Although chemotherapy provides significant symptomatic benefit, this does not translate into similar benefit in respiratory and nutritional status or QOL. Patients with constitutional symptoms, higher smoking burden, and poor KPS are less likely to respond to chemotherapy. Management of NSCLC must include strategies to improve various aspects of QOL, nutritional status and pulmonary reserve to achieve comprehensive benefit.

Asian Pacific J Cancer Prev, 9, 557-562

Distribution of HPV-16 Intratypic Variants among Women with Cervical Intraepithelial Neoplasia and Invasive Cervical Cancer in Mongolia

Battogtokh Chimeddorj, Chin Young Pak, Avirmed Damdin, Naoyuki Okamoto, Yohei Miyagi (*chimed_bat@hotmail.com*)

Mini-Abstract

HPV-16 variants of the European lineage were exclusively distributed among the Mongolian women examined, and the European prototype was overwhelmingly predominant. Since no significant differences were found between the types of variants and severities of the cervical lesions, it is possible that racial or geographic factors may have some influences on these relationships. A study was performed to assess why men do not seek screening or participate in screening programs, focusing on the demographics of men refusing a free screening program for prostate cancer.

Asian Pacific J Cancer Prev, 9, 563-568

Eating Habits, Knowledge about Cancer Prevention and the HPLP Scale in Turkish Adolescents

Hafize Ozturk Can, Esin Ceber, Neriman Sogukpinar, Birsen Karaca Saydam, Semih Otles, Gulsun Ozenturk

(*hafize.ozturk@ege.edu.tr*)

Mini-Abstract

Although they have some information, the adolescents surveyed did not have preventive skills relative to their practical life. In general in order to ensure cancer prevention and a healthy life style social, cultural and sportive activities should be encouraged and educational programmes supporting these goals should be designed and applied for all stages of life, starting in early childhood.

Asian Pacific J Cancer Prev, 9, 569-574

Comparison between Siriraj Liquid-based and Conventional Cytology for Detection of Abnormal Cervicovaginal Smears: A Split-sample Study

Somsak Laiwejpithaya, Manee Rattanachaiyanont, Mongkol Benjapibal*, Nathaya Khuakoonratt, Dittakran Boriboonhirunsarn, Sujera Laiwejpithaya, Suthi Sangkarat, Weerasak Wongtiraporn (*simbj@mahidol.ac.th*)

Mini-Abstract

The results from Siriraj-LBC and conventional cytology have high diagnostic agreement and minimal to fair correlation. The Siriraj-LBC increases detection rate of abnormal cervicovaginal cells with probable decrease in false negatives but increase in false positives from the baseline values by conventional cytology. Therefore the screening performance of Siriraj-LBC is not inferior to the conventional cytology and this approach may be used as an alternative screening method for cervical cancer.

Asian Pacific J Cancer Prev, 9, 575-580

Knowledge, Attitude and Practices of Non-oncologist Physicians Regarding Cancer and Palliative Care: A Multi-center Study from Pakistan

Asim Jamal Shaikh, Nisar Ahmed Khokhar, Sajjad Raza, Shiyam Kumar, Ghulam Haider, Aneeta Ghulam Haider, Rabia Muhammad, Nehal Masood (*asim.jshaikh@aku.edu*)

Mini-Abstract

A cross-sectional study was conducted in three tertiary care hospitals and areas of general practice in Pakistan of knowledge of physicians about all aspects of palliative care for end stage management. Most physicians, including consultants, were unaware of the term hospice. Many did not know where to refer cases of cancer and about the commonest cancers in Pakistani males. Awareness of palliative care among primary physicians needs to be improved for cancer prevention and control.

Asian Pacific J Cancer Prev, 9, 581-584

Effect of Demographic and Clinicopathologic Factors on Prognosis of Early Gastric Cancer in Iran

Bijan Moghimi-Dehkordi, Azadeh Safae, Mohamad Amin Pourhoseingholi, Mohammad Reza Zali

(*b_moghimi_de@yahoo.com*)

Mini-Abstract

The aim of this study was to estimate some prognostic factors that affect on overall survival of patients with early gastric cancer. The findings of this study indicate that lymph node metastasis and tumor size are the most independent prognostic factors in these patients.

Asian Pacific J Cancer Prev, 9, 585-588

Impact of Socio-economic Factors in Delayed Reporting and Late-stage Presentation among Patients with Cervix Cancer in a Major Cancer Hospital in South India

Michelle Kaku, Aleyamma Mathew, B Rajan (*amathew@rccvm.org*)

Mini-Abstract

The impact of socio-economic and demographic status (SEDS) factors on the stage of cervical cancer at diagnosis, symptom duration and delay-time from diagnosis to registration was determined by analysing data for the year 2006 from the Regional Cancer Centre (RCC), Trivandrum, Kerala, India. Elevated risks for late stage reporting among cervical cancer patients were observed for women who were widowed/divorced and had a lower education, with no bleeding. This analysis helped to identify populations at increased risk of diagnosis at later stages of cancer with the ultimate intent of providing health education and detecting cancer at earlier stages.

Asian Pacific J Cancer Prev, 9, 589-594

Ethanollic Rhizome Extract from *Kaempferia parviflora* Wall. ex. Baker Induces Apoptosis in HL-60 Cells

Ratana Banjerdpongchai, Kittiphan Suwannachot, Viboon Rattanapanone, Bungorn Sripanidkulchai

(*ratana@chiangmai.ac.th*)

Mini-Abstract

Kaempferia parviflora Wall. ex. Baker is a Thai herb containing many flavonoids that have anti-inflammatory, anti-allergic and antioxidant activities. The objective of this study was to demonstrate apoptotic effects of *Kaempferia parviflora* Wall. ex. Baker rhizome ethanollic extract on HL-60 cells in vitro. The extract suppressed HL-60 cell growth and decreased cell viability in a dose- and time-dependent manner. Apoptotic cell death was demonstrated by changes in cell morphology, externalization of phosphatidylserine on the cell surface, loss in mitochondrial transmembrane potential and activation of caspase 3. Apoptosis induced by *K. parviflora* Wall. ex. Baker rhizome ethanollic extract was enhanced by treatment with paclitaxel or doxorubicin, and inhibitors of Akt, PI3-K and MEK.

Asian Pacific J Cancer Prev, 9, 595-600

Importance of Social Support for Functional Status in Breast Cancer Patients

Sevgi Ozkan, Filiz Ogce (filiz.ogce@ege.edu.tr)

Mini-Abstract

The role of social support in functional status to a diagnosis of cancer was examined in 84 patients with breast cancer. Multivariate techniques were used to assess the relationships among the dimensions of social support, as measured by the Multidimensional Scale of Perceived Social Support (MSPSS), and functional status, assessed with the Inventory of the Functional Status Cancer (IFSA-CA). The results indicated significant independent associations between support and functional status outcomes. Nurses cognizant of breast cancer survivors challenges and concerns in areas of social support and are in a unique position to enhance functional status.

Asian Pacific J Cancer Prev, 9, 601-604

Attitudes toward Hepatitis B and Liver Cancer Prevention among Chinese Americans in the San Francisco Bay Area, California

Ellen T Chang, Bang H Nguyen, Samuel KS (ellen@nccc.org)

Mini-Abstract

Chronic hepatitis B and associated liver cancer constitute important health threats with disparity among Asian/Pacific Islander Americans (APIs). Primary motivations for hepatitis B vaccination were protection of future health and avoidance of hepatitis B. However, factors that discouraged people from testing or vaccination included costs, lack of health insurance, fear of side effects, worries about reliability or efficacy, poor patient-doctor communication, reliance on professional opinion, apparent good health, inconvenience, and personal preference. Our study identified common attitudes and influences regarding the decision to take preventive action against hepatitis B and liver cancer.

Asian Pacific J Cancer Prev, 9, 605-613

Screening for Oral Cancer/Pre-cancer: Knowledge and Opinions of Dentists Employed in the Public Sector Dental Services of Sri Lanka

A Ariyawardana, L Ekanayake (lilanie@pdn.ac.lk)

Mini-Abstract

The aim of the present study was to assess knowledge and opinions related to oral cancer screening among dentists employed in public sector dental services in Sri Lanka. The results revealed that a fairly large proportion of respondents were knowledgeable about oral cancer screening but as there was a reasonable percentage whose knowledge about oral cancer screening was poor there is a need for continuing education programmes.

Asian Pacific J Cancer Prev, 9, 615-618

Diethylnitrosamine-induced Hepatic Lesions are Greater in Rats Maintained under a Light-dark Cycle than under Constant Light, Related to the Locomotor Activity Rhythm

Yoshiaki Isobe, Katsumi Fukamachi, Hideki Hida, Hiroyuki Tsuda,

Hitoo Nishino (yisobe@med.nagoya-cu.ac.jp)

Mini-Abstract

Environmental lighting conditions affect the circadian rhythm and carcinogenesis. The present study was conducted to determine influence of circadian rhythmicity on diethylnitrosamine induction of preneoplastic lesions and locomotor activity. Two weeks after DEN injection, locomotor activity in 24 hr had increased under the LD and numbers of lesions were altered. Circadian rhythmicity might thus influence carcinogenicity of DEN.

Asian Pacific J Cancer Prev, 9, 619-624

Immunohistochemical Overexpression of p16 Protein Associated with Cervical Cancer in Thailand

**Adisorn Jedpiyawongse, Patcharin Homcha-em, Anant Karalak,
Petcharin Srivatanakul** (*adisorn_j2007@hotmail.com*)

Mini-Abstract

The objective of this study is to examine the expression of p16 protein in cervical carcinoma in Thailand by immunohistochemistry. Strong immunoreactivity for the p16 protein was observed in only the nuclei and cytoplasm of all cervical neoplastic cells. This study supported the idea that immunohistochemical overexpression of the p16 protein may be a useful screening test for cervical cancer. In addition, p16 immunohistochemistry is useful for helping in the interpretation of cervical histology samples, facilitating more rapid diagnosis.

Asian Pacific J Cancer Prev, 9, 625-630

Computational Prediction of Nuclear Localization Signals and Structural Characteristics of 91 Types of HPV E6 Proteins

Maryam Esmaili, Hassan Mohabatkar (*mohabat@shirazu.ac.ir*)

Mini-Abstract

Human papillomaviruses (HPVs) are small DNA tumor viruses that replicate and assemble exclusively in the nucleus. Thus their proteins, including E6, must carry nuclear localization signals (NLSs) to enter the nucleus. To analyze and to predict the nuclear localization signals and several post translational modifications by bioinformatics analysis, we obtained 91 E6 protein sequences from available databases. According to the results, all NLSs of HPV E6 proteins could be assigned to 11 categories.

Asian Pacific J Cancer Prev, 9, 631-636

The Relationship Between Tobacco Advertisements and Smoking Status of Youth in India

**Payal B Shah, Mangesh S
Pednekar, Prakash C Gupta, Dharendra N Sinha** (*payalbipin@gmail.com*)

Mini-Abstract

The objective was to examine the relationship between tobacco advertisements, counter-advertisements, and smoking status among Indian youth. Students watching anti-smoking media messages were less likely to be current smokers, while those who were exposed to cigarette brand names during sports events and other televised programs, newspapers or magazines, and being offered free cigarette or cigarette-branded merchandise promotions were significantly more likely to be smokers.

Asian Pacific J Cancer Prev, 9, 637-642

Outcomes of Pediatric Nephroblastoma in Southern Thailand

**Surasak Sangkhathat*, Thirachit Chotsampancharaen, Kanita Kayasut,
Sakda Patrapinyokul, Piyawan Chiengkriwate, Rungarun Kitichet,**

Matinee Maipang (*yburgri@akunet.org*)

Mini-Abstract

The outcomes of nephroblastoma (Wilms' tumor, WT) in our institute and other developing countries are notably below results in most developed countries. The objective of this study was to review treatment outcomes of pediatric nephroblastoma in southern Thailand during the past decade and attempt to isolate factors associated with a poor prognosis. The poor outcome of pediatric nephroblastoma in southern Thailand seems to be related at least in part to failures in primary treatment in stage I patients. Large tumor size and gross hematuria were associated with risk of a poorer outcome.

Asian Pacific J Cancer Prev, 9, 643-647

A Case-Control Study on the Association Between Environmental factors and the Occurrence of Acute Leukemia Among Children in Klang Valley, Malaysia

Hairul Izwan Abdul Rahman, Shamsul Azhar Shah, Hamidah Alias,

Hishamshah Mohd Ibrahim (*drsham@mail.hukm.ukm.my*)

Mini-Abstract

In Malaysia, acute leukemia is the most common cancer among children below the age of 15. A case-control study was here conducted for cases from the Klang Valley, Malaysia, who received treatment at the National University of Malaysia Hospital (HUKM) and Kuala Lumpur General Hospital (GHKL). Some socioeconomic, demographic, and environmental factors are strong predictors of the occurrence of acute leukemia among children in Klang Valley, Malaysia. In terms of environmental factors, it is recommended that future housing areas should be developed at least 200 m away from power lines. *Asian Pacific J Cancer Prev, 9, 649-652*

Interobserver Reproducibility in Determining p16 Overexpression in Cervical Lesions : Use of a Combined Scoring Method

Songkhun Vinyuvat, Anant Karalak, Cheepsumon Suthipintawong, Kobkul Tungsinmunkong, Pilaiwan Kleebkaow, Prasert Trivijitsilp, Sumalee Siriaungkul, Surang Triratanachat, Surapan Khunamornpong, Tuenjai Chuangsuwanich, Jongkolnee Settakorn

(*songkhun@ymail.com*)

Mini-Abstract

The objective was to evaluate interobserver reproducibility of a combined scoring method for immunohistochemical interpretation of p16 overexpression in cervical lesions. The proposed combined scoring method shows good reproducibility among the participating pathologists and good correlation with the histologic diagnosis. This method may be a useful guide in the interpretation of p16 expression in cervical epithelial lesions. *Asian Pacific J Cancer Prev, 9, 653-657*

Association between the 1793G>A MTHFR Polymorphism and Sporadic Colorectal Cancer in Iran

Mahdi Montazer Haghighi, Seyed Reza Mohebbi, Rouhallah Najjar Sadeghi, Mohsen Vahedi,

Somayeh Ghiasi, Mohammad Reza Zali (*hayati@kb.usm.my*)

Mini-Abstract

In sporadic colon cancer cases, a significant reduction in recurrence risk was seen in MTHFR G1793A heterozygotes limited to those who received folate supplements. In conclusion, our study is compatible with previous findings concerning a reverse association between the MTHFR 1793G>A genotype with cancers in different populations. *Asian Pacific J Cancer Prev, 9, 659-662*

C-erbB-2 Onco-Protein Expression in Breast Cancer: Relationship to Tumour Characteristics and Short-Term Survival in Universiti Kebangsaan Malaysia Medical Centre

NA Sharifah, BR Lee, CH Clarence-Ko, GC Tan, MS Shiran, I Naqiyah,

M Rohaizak, I Fuad, AM Tamil (*sharifah@mail.hukm.ukm.my*)

Mini-Abstract

The present retrospective cohort study evaluated the relationship between c-erbB-2 onco-protein overexpression with various tumour characteristics and survival rate of breast cancer patients treated at the Universiti Kebangsaan Malaysia Medical Centre (UKMMC) between 1996-2000. Multivariate analysis showed that it is not an independent prognostic indicator. *Asian Pacific J Cancer Prev, 9, 663-670*

Burden of Cancer and Projections for 2016, Indian Scenario: Gaps in the Availability of Radiotherapy Treatment Facilities

NS Murthy, Kishore Chaudhry, GK Rath (*nsmurthy44@yahoo.com*)

Mini-Abstract

Plausible projections of future burden of cancer in terms of incident cases and requirement of radiotherapy treatment facilities at the national and state level are useful aids in planning of cancer control activities. The present communication attempts to provide a scenario for cancer in India during the year 2001 and its likely change by 2016. The existing treatment facilities for cancer control in-terms of radiotherapy and financial allocation are woefully inadequate to take care of even the present load. The only way to fight this scourge under such circumstances is to have pragmatic programmes and policies based on currently available scientific information and sound public health principles.

Asian Pacific J Cancer Prev, 9, 671-677

Cancer Data Analysis in the Pathology Department, Combined Military Hospital, Multan, Pakistan 2002-2007

Muhammad Atique, Muhammad Jan Leghari, Muhammad Shehbaz Amin, Saadat Parveen, Nuzhat Mushahid,

Muhammad Asad Ullah Khan (*uatiq@hotmail.com*)

Mini-Abstract

In a hospital based tumour registry at CMH, Multan, the common tumours in males, in order of decreasing frequency were leukaemia, prostate cancer, urinary bladder cancer, skin cancer and lymphomas. In females they were leukaemia, breast cancer, skin cancer, gallbladder cancer and lymphomas. In both sexes, the most common malignancy was leukaemia, pointing to a possible link with extensive use of pesticides and other agricultural chemicals in this region of the country.

Asian Pacific J Cancer Prev, 9, 679-681

Whole Body 18F-FDG PET/CT Imaging in the Detection of Primary Tumours in Patients with a Metastatic Carcinoma of Unknown Origin

Ali Osman Kaya, Ugur Coskun, Mustafa Unlu, Umit Ozgur Akdemir, Nuriye Yildirim Ozdemir, Nurullah Zengin, Mustafa Benekli, Ramazan Yildiz, Emel Yaman, Banu Ozturk, Mahmut Gumus, Aytug Uner, Deniz Yamac, Emel Ucgul, Suleyman Buyukberber, for the Anatolian Society of

Medical Oncology (*ugurcos@hotmail.com*)

Mini-Abstract

Whole body 18F-FDG PET/CT imaging has a high rate of detection of a primary tumor in patients with a carcinoma of unknown origin.

Asian Pacific J Cancer Prev, 9, 683-686

Molecular Cytogenetic Analysis of Urothelial Carcinomas using Urine Samples

M Ayati, V Najjaran Tousi, T Sabokbar, H Vaziri-Nasab, F Mehrkhani, H Jamshidian, J Dastan, AR Mosavi-Jarrahi, SR Ghaffari

(*saeed@ghaffari.org*)

Mini-Abstract

Urinary cells obtained from voided urine specimens of 46 patients with urothelial carcinomas (UCs) and 10 normal individuals were analyzed with 3 different centromeric fluorescence in situ hybridization (FISH) probes. There was a statistically significant association between the number of cell abnormalities in chromosome 17 and the tumour stage. No relationship was found between the type of chromosomal abnormality and grade. Thus feasibility and reliability of a FISH based approach was confirmed for detection of UC in urine samples.

Asian Pacific J Cancer Prev, 9, 687-690

Effects of Emotional Support-Focused Nursing Interventions on the Psychosocial Adjustment of Breast Cancer Patients

Aysun Babacan Gumus, Olcay Cam (*aysungumus@hotmail.com*)

Mini-Abstract

The purpose was to examine the effect of emotional support-focused nursing interventions on the psychosocial adjustment of breast cancer patients. In the comparison of the PAIS-SR pretest and post-test mean scores it was determined that there was a significant increase in patients adaptation to health care orientation, domestic environment, sexual relationships, extended family relationships and social environment ($p < 0.001$), and a significant decrease in psychological distress. Thus emotional support-focused nursing interventions had a part in increasing patients psychosocial adjustment.

Asian Pacific J Cancer Prev, 9, 691-697

E-Cadherin Expression Correlates With Histologic Type But Not Tumour Grade in Invasive Breast Cancer

Md Isa Nurismah, O Noriah, MY Suryati, NA Sharifah (*nurismahmdisa@yahoo.com*)

Mini-Abstract

The traditional classification of infiltrating breast carcinomas into ductal and lobular can be diagnostically challenging in a small proportion of cases with equivocal histological features and in in-situ lesions with overlapping features. We conclude from this study that E-cadherin is a useful marker to differentiate between IDC and ILC of the breast. A larger study of IDCs is now needed to further evaluate the correlation between E-cadherin and tumour grade to estimate its prognostic potential.

Asian Pacific J Cancer Prev, 9, 699-702

Effects of Socio-economic and Demographic Factors in Delayed Reporting and Late-stage Presentation among Patients with Breast Cancer in a Major Cancer Hospital in South India

Rabia Ali, Aleyamma Mathew, B Rajan (*amathew@rcctvm.org*)

Mini-Abstract

The distribution of socio-economic and demographic (SEDs) factors among breast cancer patients was analysed with an assessment of their impact on the stage at diagnosis of the disease and symptom duration. Elevated risks for late stage reporting among breast cancer patients were observed for women who were unmarried, widowed/divorced, with lower education for illiterate women and for women with primary school education and for women with middle school education) and post-menopausal women.

Asian Pacific J Cancer Prev, 9, 703-707

Epidemiology of Soft Tissue Sarcomas in Karachi South, Pakistan (1995-7)

Yasmin Bhurgri, Hadi Bhurgri, Shahid Pervez, Naila Kayani, Ahmed Usman, Imtiaz Bashir, Asif Bhurgri, Sheema H Hasan, SMH Zaidi (*yasmin.bhurgri@gmail.com*)

Mini-Abstract

The present study was conducted with the objective of examining epidemiological characteristics of soft tissue sarcomas (STSs) in Karachi. Rhabdomyosarcomas and Ewing's sarcomas were more frequent in children and adolescents whereas fibrosarcomas, leiomyosarcomas, liposarcomas, malignant fibrous histiocytomas (MFHs) and schwannomas were encountered in the elderly. Conclusion: Karachi falls into a high risk region for STS, observed in a relatively younger population, with a male predominance, high frequency of rhabdomyosarcoma and advanced stage at diagnosis.

Asian Pacific J Cancer Prev, 9, 709-714

Prevalence of High-grade Cervical Lesion in Women with LSIL and HSIL Cytology and Prevalence of Invasive Cancer in Women Cytologically Positive for Malignancy

Sathone Boonlikit

(sathone_b@yahoo.com)

Mini-Abstract

To determine the prevalence of high-grade cervical lesion (CIN 2 or worse, CIN 2+) and the prevalence of invasive cancers in women with LSIL, HSIL and positive for malignancy on cytology, respectively, a retrospective study of patients undergoing colposcopy in Rajavithi hospital between 2003-2004 was performed. The present study confirms that women with HSIL have high prevalence of high-grade cervical lesions and malignancy. Women with LSIL may be managed less aggressively because of the negligible risk of more advanced lesions. Smears positive for malignancy are inconsistent predictors of invasive cancer.

Asian Pacific J Cancer Prev, 9, 715-718

Clinical Outcome of Iranian Patients with Advanced Ovarian Cancer with Neoadjuvant Chemotherapy versus Primary Debulking Surgery

Fatemeh Ghaemmaghami, Mojgan Karimi-Zarchi, Mitra Modares-Gilani, Azamsadat Mousavi, Nadereh Behtash

(ftghaemmagh@yahoo.com)

Mini-Abstract

We performed a retrospective analysis on 92 patients with advanced ovarian cancer admitted to Vali-Asr Gynecologic oncology departments during 1996–2002. We conclude that neoadjuvant chemotherapy followed by successful interval debulking surgery can lead to high survival percentage in patients with chemoresponsive advanced ovarian cancer; although the result is more effective in those with optimal primary cytoreduction, we still got the same results with those with suboptimal primary cytoreduction.

Asian Pacific J Cancer Prev, 9, 719-724

Cancer Incidence in North Cyprus (1990-2004) Relative to European Rates

Evren Hincal, Bahar Taneri, Ufuk Taneri,

Mustafa BA Djamgoz (ehincal@neu.edu.tr)

Mini-Abstract

Cancer incidence in North Cyprus (NC), deemed an interesting epidemiological case due to possible contrasting prevailing factors in relation to South and North Europe (SE and NE), was evaluated for the period 1990-2004. The following cancer cases were more common than in SE and NE: lung (M) and skin (both genders). Breast (F), prostate, stomach (F), bladder (both sexes), cervix and corpus were less frequent; the rest were comparable. There was no difference in the annual trends of ASR or AAI for NC, compared with SE or NE. Thus cancer incidence in NC shares many quantitative features with the rest of Europe.

Asian Pacific J Cancer Prev, 9, 725-732

Role of GSTM1 (Present/Null) and GSTP1 (Ile105Val) Polymorphisms in Susceptibility to Acute Lymphoblastic Leukemia among the South Indian Population

KJ Suneetha, K Nirmala Nancy, KR Rajalekshmy, TG Sagar, T Rajkumar

(nirc18@gmail.com)

Mini-Abstract

Acute lymphoblastic leukaemia (ALL) is the most common pediatric malignancy worldwide. The origin of this disease may be explained by a combination of genetic and environmental factors. The present combined analysis of GSTM1 and GSTP1 showed significant higher risk associated with the GSTM1 (null/null) and GSTP1 [(Ile/Val)/ (Val/Val)] genotype

Asian Pacific J Cancer Prev, 9, 733-736

Accuracy of Intra-operative Frozen Sections in the Diagnosis of Ovarian Masses

Prapaporn Suprasert, Surapan Khunamornpong, Anchali Phusong, Jongkolnee Settakorn,

Sumalee Siriaungkul (*psuprase@mail.med.cmu.ac.th*)

Mini-Abstract

The accuracy of frozen section diagnosis in the intraoperative evaluation of ovarian masses is very important with regard to surgeon selection of appropriated operating procedures. For evaluation in our institute, the records of 127 patients with ovarian masses submitted for intraoperative frozen sections between January 2001 and December 2005 were reviewed. The accuracy of intraoperative frozen section diagnosis of ovarian masses was high and frozen sections also helped in the evaluation of metastatic tumors to the ovary. Mucinous tumors constitute an important group causing diagnostic discrepancies. *Asian Pacific J Cancer Prev, 9, 737-740*

Symptom Management in Patients with Cancer of the Female Reproductive System Receiving Chemotherapy

Yupin Phianmongkhon¹*, Natthawan Suwan (*yupinp@mail.nurse.cmu.ac.th*)

Mini-Abstract

This study was conducted to examine the feelings, symptom management, and needs of patients with gynecological cancer receiving chemotherapy at Chiang Mai University Hospital, Chiang Mai, Thailand. The patients experienced a variety of feelings, symptom management, and health needs. Nurses need to explain the pathology of the occurring symptoms so that the patients can understand and accept the symptoms to lessen their negative impact. *Asian Pacific J Cancer Prev, 9, 741-745*

Association of Colorectal Carcinoma with Metabolic Diseases; Experience with 138 Cases from Kelantan, Malaysia

Nor Hayati Othman*, Anani Aila Mat Zin (*hayati@kb.usm.my*)

Mini-Abstract

Kelantan in Malaysia has a high prevalence of diabetes and colorectal cancer is also on the rise. This study is to determine the association of metabolic diseases, particularly diabetes type 2 [DM2] and hypertension, with colorectal cancer patients in our population. In this retrospective study, conducted on all colorectal carcinomas in Hospital Universiti Sains Malaysia (HUSM) in Kelantan from the years 2001-2006, diabetes type 2 and hypertension demonstrated significant association [$p < 0.05$] with the stage and the site of the cancer. To reduce CRC incidence, the prevalence of DM2 needs to be addressed. *Asian Pacific J Cancer Prev, 9, 747-751*

Relation between Demographic Factors and Type of Gastrointestinal Cancer using Probit and Logit Regression

Asma Pourhoseingholi, Mohamad Amin Pourhoseingholi, Mohsen Vahedi, Azadeh Safaee, Bijan Moghimi-Dehkordi, Fatemeh Ghafarnejad,

Mohammad Reza Zali (*b_moghimi_de@yahoo.com*)

Mini-Abstract

The organ system involved with more than 38% of all cancers in Iran is the gastrointestinal (GI) tract. The objective of this study was to investigate the relation between demographic factors and type of gastrointestinal cancer using probit and logit models. Men are more likely have colorectal cancer than women. Older people are more likely to have gastric cancer than younger people. In esophagus cancer all factors were significant. Results from probit and logit models were similar, indicating that probit analysis can be employed as a logit model to analyze relationships between demographic factors and cancer type. *Asian Pacific J Cancer Prev, 9, 753-755*

Expression of Cyclooxygenase-1 in Epithelial Ovarian Cancer: A Clinicopathological Study

**Jakkapan Khunnarong,
Siriwan Tangjitgamol, Sumonmal Manusirivithaya, Pacheun Suekwattana,
Surawute Leelahakorn** (*jak020@hotmail.com*)

Mini-Abstract

The objective was to determine immunohistochemical expression of cyclooxygenase-1 (COX-1) in epithelial ovarian cancer (EOC), and any association with clinical features and prognosis. Overall, we found COX-1 expression in 83.2 %. Non-mucinous lesions had significant higher levels of expression than mucinous tumors, but there was no link expression with other clinicopathological factors or survival. In conclusion, EOCs showed high expression of COX-1, especially with a non-mucinous histology, but this appears to lack prognostic significance.

Asian Pacific J Cancer Prev, 9, 757-762

Clastogenic Potential of Ruta graveolens Extract and a Homeopathic Preparation in Mouse Bone Marrow Cells

Korengath C Preethi, Cherappally KK Nair, Ramadasan Kuttan (*cbajdik@bccrc.ca*)

Mini-Abstract

Ruta graveolens belonging to family Rutaceae has long been traditionally used as a medicinal plant as well as a flavoring agent in food. However, very little data are available on the toxicity of the plant. This report presents evidence on the genotoxic and clastogenic potential of an extract of *Ruta graveolens* and *Ruta 200C*, a homeopathic preparation. Various types of chromosomal aberrations were noted in bone marrow cells after treatment. These results indicate that *Ruta graveolens* and *Ruta 200C* may induce genotoxicity in animals.

Asian Pacific J Cancer Prev, 9, 763-769

Time Trend in Breast and Cervix Cancer of Women in India, (1990-2003)

Ramnath Takiar, Atul Srivastav (*ramnath_takiar@yahoo.co.in*)

Mini-Abstract

The Indian Council of Medical Research (ICMR) started a National Cancer Registry Programme (NCRP) in the year 1982 with the main objective of generating reliable data on the magnitude and pattern of cancer in India. The present paper aims to provide the time trends in the incidence of breast and cervix cancer among females of India. The incidence data collected by Bangalore, Barshi, Bhopal, Chennai, Delhi and Mumbai over the period 1990 to 2003 formed the sources. Histopathologic confirmation for both malignancies was found to be more than 80% in these registries. It is concluded that in India the cervix cancer rates are decreasing while breast cancer is on the increase.

Asian Pacific J Cancer Prev, 9, 777-780

Utility of Ki-67 and p53 in Distinguishing Cervical Intraepithelial Neoplasia 3 from Squamous Cell Carcinoma of the Cervix

**Geok Chin Tan, Noor Akmal Sharifah,
Mohd Sidik Shiran, Shuib Salwati, Ahmad Zailani Hatta,**

Hock Oon Paul-Ng (*tan_geok_chin@yahoo.com*)

Mini-Abstract

The differentiation between cervical intraepithelial neoplasia 3 (CIN 3) and early squamous cell carcinoma (SCC) of the cervix may be difficult in certain situations. The present immunohistochemical results showed that differences of Ki-67 and p53 expression between CIN 3 and SCC are statistically significant. In conclusion, Ki-67 and p53 may serve as helpful adjuncts to routinely-stained histological sections in differentiating between CIN 3 and SCC.

Asian Pacific J Cancer Prev, 9, 781-784

Clinical Relevance of Atypical Squamous Cells of Undetermined Significance by the 2001 Bethesda System: Experience from a Cervical Cancer High Incidence Region

Nuttavut Kantathavorn, Chumnann Kietpeerakool, Prapaporn Suprasert, Jatupol Srisomboon, Surapan Khunamornpong, Kanchana Nimmanhaeminda, Sumalee Siriaunkgul (*nutjuju@yahoo.com*)

Mini-Abstract

The aim of this study was to evaluate the underlying lesions and factors predicting cervical intraepithelial neoplasia (CIN) 2+ in women who had “atypical squamous cells of undetermined significance” (ASC-US) on cervical cytology in the region with a high incidence of cervical cancer. ASC-US cytology in our population has a relatively high prevalence of underlying invasive carcinoma. Nulliparity and current oral contraceptive use are independent predictors for harboring CIN 2+.

Asian Pacific J Cancer Prev, 9, 785-788

Unified Modeling Language (UML) for Hospital-based Cancer Registration Processes

Naomi Shiki, Yuko Ohno, Ayumi Fujii, Taizo Murata, Yasushi Matsumura (*ohno@sahs.med.osaka-u.ac.jp*)

Mini-Abstract

Hospital-based cancer registry involves complex processing steps that span across multiple departments. In addition, management techniques and registration procedures differ depending on each medical facility. Establishing processes for hospital-based cancer registry requires clarifying specific functions and labor needed. In recent years, the business modeling technique, in which management evaluation is done by clearly spelling out processes and functions, has been applied to business process analysis. By using Unified Modeling Language, we were able to clarify functions and extract the typical processes for a hospital-based cancer registry. Modeling can provide a basis of process analysis for establishment of efficient hospital-based cancer registration processes in each institute.

Asian Pacific J Cancer Prev, 9, 789-796

Study of Social Loss or Gain from a Particular Cause: Scope for the Developing Countries - a Review with Reference to Cancer

Murali Dhar, S Lahiri, R Vijayasimha, NC Ashok, NS Murthy (*murali_dhar_1966@yahoo.com*)

Mini-Abstract

Incidence rates have long been used to assess the burden of different diseases in a population, whereas loss due to occurrence of diseases is studied using the death rates. Death rates however, are based on and therefore describe, only number of lives lost. There have been two approaches to arrive at the actual loss or gain from a particular cause: the person years of life lost and cause elimination life table approaches. This review covers these approaches and the competing risk theory and models focusing on the methodological developments. Our study suggests freedom in the selection of a modeling or a descriptive approach without any considerable loss of accuracy but at the same time emphasizes consideration of competing risks.

Asian Pacific J Cancer Prev, 9, 797-804

Tobacco Control in India: Present Scenario and Challenges Ahead

Tarveen Jandoo, Ravi Mehrotra (*rm8509@gmail.com*)

Mini-Abstract

Tobacco imposes a colossal burden of disease and death leading to catastrophic health, social, economic and environmental effects. Prevalence and practices of tobacco use in India are varied and disparate. Tobacco consumption continues to grow at 2–3% per annum, and by 2020 it is predicted that it will account for 13% of all deaths in the country. India is now demonstrating a steely resolve to contain the menace of tobacco through a comprehensive control strategy that combines several demand and supply reduction measures.

Asian Pacific J Cancer Prev, 9, 805-810

Information Communication Technology: New Approach for Rural Cancer Care Improvement

Elham Maserat (*elhammaserat@yahoo.com*)

Mini-Abstract

Cancer control aims to reduce the incidence, morbidity, and mortality of cancer and to improve the quality of life of cancer patients. For rural populations this presents particular problems. This article covers challenges of oncology care in rural areas and solutions via applying information communication technology with specialty telemedicine for overcoming problems in prevention, early diagnosis, treatment, and palliative care. In addition, telecommunications infrastructures and frameworks for implementation of telemedicine are described.

Asian Pacific J Cancer Prev, 9, 811-814

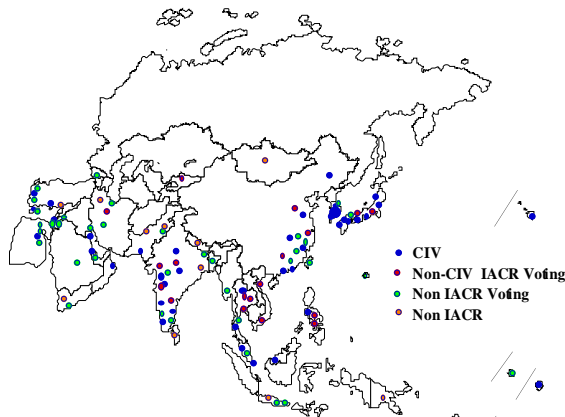
Establishment of an Asian Cancer Registry Network - Problems and Perspectives

Malcolm A Moore, Hai-Rim Shin, Maria-Paula Curado,

Tomotaka Sobue (*apocpcontrol@yahoo.com*)

Mini-Abstract

Cancer registration is the base for our understanding of the burden of neoplastic disease in our populations at the local, regional and national levels. Comparability of data is essential for interpretation and this in turn depends on standardization of methodology and the diagnostic and other criteria applied. If this is to be achieved across Asia, some form of international organization is clearly necessary. The question therefore should be whether the existing arrangement is adequate, and if this is not the case how a network in Asia might be established with due consideration of aims and attainable objectives. The present commentary focuses on the contributions



made by the International Association of Cancer Registries (IACR) and individual country-based or region-based associations already active in Asia. Building on an analysis of the present status in Asia, as well as experience of the European Network of Cancer Registries (ENCR) and the North American Association of Central Cancer Registries (NAACCR), potential problems and possible solutions are here reviewed, with coverage of both organizational and financial constraints. An argument is presented here that there is a rationale for some form of an Asian Network of Cancer Registries, supported by the

International Agency for Research on Cancer (IARC) and the UICC-Asian Regional Office, working alongside the IACR and existing national organizations and research institutes.

Asian Pacific J Cancer Prev, 9, 815-832

CT Colonography - Towards Applications for Colorectal Cancer Screening

Gen Iinuma, Mototaka Miyake, Yasuaki Arai,

Masahiro Suzuki, Yukio Muramatsu, Noriuki Moriyama (*giinuma@ncc.go.jp*)

Mini-Abstract

Three-dimensional (3D) imaging of the large intestine is globally called computed tomography colonography (CTC). CTC has been intensively investigated for application in colorectal cancer screening in Western countries and with the advent of multi-slice CT (MSCT), which provides effective high resolution in 3D CT images, the diagnostic use of CT for colorectal lesions has become a concept widely accepted throughout the world. Computer-aided detection (CAD) for colorectal polyps using digital CT image data and digital pre-processing are also advancing in the West. Compared with colonoscopy, which depends largely on the skill of the performer, CTC produces objective and reproducible diagnostic images and presents a high probability of standardizing examination protocols. Development of effective systems for screening colorectal lesions is expected, leveraging the excellent processing capability of MSCT to enhance 3D visualization and allow efficient detection.

Asian Pacific J Cancer Prev, 9, 833-840

ASIAN PACIFIC JOURNAL OF CANCER PREVENTION

INFORMATION FOR AUTHORS

APJCP Editorial Office. The editorial offices are located in Thailand and Japan but submission is all electronic.

Types of Manuscript.

Editorials	Reviews/Mini-reviews	Research Communications
Commentaries	Policy and Practice Reports	Letters to the Editor

Peer Review.

Manuscripts submitted to the APJCP are reviewed by two or more authorities for significance and validity and comments are all supplied to the author. Advice as to acceptability will normally be supplied within one or two months.

Submission of Manuscripts.

Manuscripts can be submitted to Malcolm Moore at apocpcontrol@yahoo.com or any of the Subject Editors listed inside the front cover. There are no submission or page charges. Please send a Microsoft Word file for text and a Powerpoint file for figures. No hard copy is necessary except when a figure may be needed for scanning.

Conflict of Interest.

Information as to commercial or other links which might pose a conflict of interest should be provided. Funding sources can be acknowledged in the Acknowledgements.

Permission for Inclusion of Published Material.

The authors have full responsibility for obtaining permission for inclusion of previously published material in work submitted to the APJCP.

Organization of Manuscripts.

Title page: Concise title, authors names and affiliations, address for correspondence, Fax number, Email address

Abstract page: Concise abstract and key words

Text pages: Arranged as appropriate for the type of manuscript

References: In text cited as Yellow (2000), (Brown and Pink, 2000), (Black et al., 2000): NOT NUMBERED!

List: alphabetically then by year, all authors if up to five, three and et al for more.

Format: Brown A, Pink B, Black C, et al (2000). Cancer prevention in the Asian-Pacific. *Asian Pac J Cancer Prev*, **8**, 10-2.

Brown A, Pink B, Black C, et al (2000). Cancer prevention. In 'Neoplasia', Eds Blue D and Red E. Asian Pacific Education Press, Bangkok pp1-10

Illustrations: Should be of size and quality for direct downloading.

Proofs and Copyright.

Proofs will be sent as pdf files. Reprints can not be provided but the authors will be able to print out whatever copies they need from the final pdf file. They retain copyright other than that necessary for publication in the APJCP.

INFORMATION FOR ANY INTERESTED IN BECOMING APOCPC MEMBERS

The quarterly electronic Asian Pacific Journal of Cancer Prevention (APJCP) is published by the Asian Pacific Organization for Cancer Prevention and Control with support from the UICC-Asian Regional Office for Cancer Control to promote increased awareness and knowledge in all areas of cancer prevention/control and to stimulate collaborative efforts and practical intervention approaches in the different countries and states of the Asian Pacific region. The journal is indexed on PubMed and Science Citation Index Expanded and free pdf files can be downloaded from our website www.apocp.org. There are no subscription charges and individual membership is free. If you wish to be listed as a member and receive a quarterly pdf **APJCP Contents and Mini-Abstracts** please send an email with your details to Malcolm Moore.

The APOCPC is a non-profit concern. Any donations and institutional membership charges (both listed in the yearly report) are used to support meetings and training courses to help achieve the aims of cancer prevention/control in the Asian Pacific region.

CONTENTS APJCP Volume 9, Number 4, Oct-Dec 2008

EDITORIAL

The APJCP in 2008 *Malcolm Moore* 541

REVIEW

Protective Effects of Asian Dietary Items on Cancers - Soy and Ginseng *Jeongson Kim* 543

RESEARCH COMMUNICATIONS

Incidence of Genitourinary Cancers in the Islamic Republic of Iran: A Survey in 2005 *Akbari et al* 549

Comparison of ER, PR & HER-2/neu (C-erb B 2) Reactivity Pattern with Histologic Grade, Tumor Size and Lymph Node Status in Breast Cancer *Azizun-Nisa et al* 553

Effect of Change in Symptoms, Respiratory Status, Nutritional Profile and Quality of Life on Response to Treatment for Advanced Non-small Cell Lung Cancer *Mohan et al* 557

Distribution of HPV-16 Intratypic Variants among Women with Cervical Intraepithelial Neoplasia and Invasive Cervical Cancer in Mongolia *Chimeddorj et al* 563

Eating Habits, Knowledge about Cancer Prevention and the HPLP Scale in Turkish Adolescents *Can et al* 569

Comparison between Siriraj Liquid-based and Conventional Cytology for Detection of Abnormal Cervicovaginal Smears: A Split-sample Study *Laiwejpithaya et al* 575

Knowledge, Attitude and Practices of Non-oncologist Physicians Regarding Cancer and Palliative Care: A Multi-center Study from Pakistan *Shaikh et al* 581

Effect of Demographic and Clinicopathologic Factors on Prognosis of Early Gastric Cancer in Iran *Moghimi-Dehkordi et al* 585

Impact of Socio-economic Factors in Delayed Reporting and Late-stage Presentation among Patients with Cervix Cancer in a Major Cancer Hospital in South India *Kaku et al* 589

Ethanollic Rhizome Extract from *Kaempferia parviflora* Induces Apoptosis in HL-60 Cells *Banjerdpongchai et al* 595

Importance of Social Support for Functional Status in Breast Cancer Patients *Ozkan and Ogec* 601

Attitudes toward Hepatitis B and Liver Cancer Prevention among Chinese Americans in the San Francisco Bay Area, California *Chang et al* 605

Screening for Oral Cancer/Pre-cancer: Knowledge and Opinions of Dentists Employed in the Public Sector Dental Services of Sri Lanka *Ariyawardana and Ekanayake* 615

Diethylnitrosamine-induced Hepatic Lesions are Greater in Rats Maintained under a Light-dark Cycle than under Constant Light, Related to the Locomotor Activity Rhythm *Isobe et al* 619

Immunohistochemical Overexpression of p16 Protein Associated with Cervical Cancer in Thailand *Jedpiyawongse et al* 625

Computational Prediction of Nuclear Localization Signals and Structural Characteristics of 91 Types of HPV E6 Proteins *Esmaili and Mohabatkar* 631

The Relationship Between Tobacco Advertisements and Smoking Status of Youth in India *Shah et al* 637

Outcomes of Pediatric Nephroblastoma in Southern Thailand *Sangkhatath et al* 643

A Case-Control Study on the Association Between Environmental factors and the Occurrence of Acute Leukemia Among Children in Klang Valley, Malaysia *Rahman et al* 649

Interobserver Reproducibility in Determining p16 Overexpression in Cervical Lesions : Use of a Combined Scoring Method *Vinyuvat et al* 653

Association between the 1793G>A MTHFR Polymorphism and Sporadic Colorectal Cancer in Iran *Haghighi et al* 659

C-erbB-2 Onco-Protein Expression in Breast Cancer: Relationship to Tumour Characteristics and Short-Term Survival in Universiti Kebangsaan Malaysia Medical Centre *Sharifah et al* 663

Burden of Cancer and Projections for 2016, Indian Scenario: Gaps in the Availability of Radiotherapy Treatment Facilities *Murthy et al* 671

Cancer Data Analysis in the Pathology Dept, Combined Military Hospital, Multan, Pakistan 2002-2007 *Atique et al* 679

Whole Body 18F-FDG PET/CT Imaging in the Detection of Primary Tumours in Patients with a Metastatic Carcinoma of Unknown Origin *Kaya et al* 683

Molecular Cytogenetic Analysis of Urothelial Carcinomas using Urine Samples *Ayati et al* 687

Effects of Emotional Support-Focused Nursing Interventions on the Psychosocial Adjustment of Breast Cancer Patients *Gumus and Cam* 691

E-Cadherin Expression Correlates With Histologic Type But Not Tumour Grade in Invasive Breast Cancer *Nurismah et al* 699

Effects of Socio-economic and Demographic Factors in Delayed Reporting and Late-stage Presentation among Patients with Breast Cancer in South India *Ali et al* 703

Epidemiology of Soft Tissue Sarcomas in Karachi South, Pakistan (1995-7) *Bhurgri et al* 709

Prevalence of High-grade Cervical Lesion in Women with LSIL and HSIL Cytology and Prevalence of Invasive Cancer in Women Cytologically Positive for Malignancy *Sathone Boonlikit* 715

Clinical Outcome of Iranian Patients with Advanced Ovarian Cancer with Neoadjuvant Chemotherapy versus Primary Debulking Surgery *Ghaemmaghami et al* 719

Cancer Incidence in North Cyprus (1990-2004) Relative to European Rates *Evren Hincal et al* 725

Role of GSTM1 (Present/Null) and GSP1 (Ile105Val) Polymorphisms in Susceptibility to Acute Lymphoblastic Leukemia among the South Indian Population *Suneetha et al* 733

Accuracy of Intra-operative Frozen Sections in the Diagnosis of Ovarian Masses *Suprasert et al* 737

Symptom Management in Patients with Cancer of the Female Reproductive System Receiving Chemotherapy *Phanmongkhol and Suwan* 741

Association of Colorectal Carcinoma with Metabolic Diseases; Experience in Kelantan, Malaysia *Othman and Zin* 747

Relation between Demographic Factors and Type of Cancer using Probit and Logit Regression *Pourhoseingholi et al* 753

Expression of Cyclooxygenase-1 in Epithelial Ovarian Cancer: A Clinicopathological Study *Khunmarong et al* 757

Clastogenic Potential of *Ruta graveolens* Extract and a Homeopathic Preparation in Mouse Bone Marrow Cells *Preethi et al* 764

Detection of Human Papillomavirus in Oral Squamous Cell Carcinoma, Leukoplakia and Lichen Planus in Thai Patients *Khovidhunkit et al* 771

Time Trend in Breast and Cervix Cancer of Women in India, (1990-2003) *Takiar and Srivastav* 777

Utility of Ki-67 and p53 in Distinguishing Cervical Intraepithelial Neoplasia 3 from SCC of the Cervix *Tan et al* 781

Clinical Relevance of Atypical Squamous Cells of Undetermined Significance by the 2001 Bethesda System: Experience from a Cervical Cancer High Incidence Region *Kantathavorn et al* 785

Unified Modeling Language (UML) for Hospital-based Cancer Registration Processes *Shiki et al* 789

COMMENTARIES

Study of Social Loss or Gain from a Particular Cause: Scope for the Developing Countries - a Review with Reference to Cancer *Dhar et al* 797

Tobacco Control in India: Present Scenario and Challenges Ahead *Jandoo and Mehrotra* 805

Information Communication Technology: New Approach for Rural Cancer Care Improvement *Elham Maserat* 811

Establishment of an Asian Cancer Registry Network - Problems and Perspectives *Moore et al* 815

CT Colonography - Towards Applications for Colorectal Cancer Screening *Iinuma et al* 833